

TECH SHEET: RapidGlide usage and safety reminders

RapidGlide Usage

- Adjust the RapidGlide unit to your desired working height making sure adjustment pin is all the way in and seated
- Lower the vehicle or component into the RapidGlide units using a floor jack, lift or overhead crane
- Never place any part of your body between a RapidGlide and vehicle / component while loading
- When using the RapidGlide on an uneven surface, always tighten safety lock bolt after vehicle is loaded – make sure safety lock bolt is loosened while loading
- When using RapidGlide with your in-house fabricated $\frac{1}{4}$ " plate fixtures, make sure your fixtures are secured to vehicle or component
- The RapidGlide is offered with or without locking wheels – please specify when ordering

Safety Reminders and Service Tips

- Immediately wipe up any liquids spilled on floor
- When operating shop equipment and power tools, always pay attention & use safety equipment
- Breathing safety equipment should be used when spray mist, fumes, or dust is present
- Exercise care in your handling of heavy parts or material
- Always use safety stands when working under vehicle / component - vehicle should be properly stabilized
- Keep moving parts of equipment & air tools well lubricated
- For your protection, wear gloves, safety glasses and safety shoes at all times



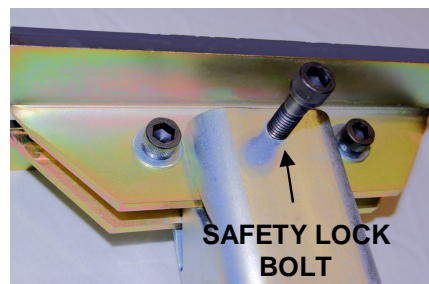
RapidGlide units roll very easily – when moving on a hill or incline always have assistance



Load vehicle using floor jack, lift or overhead crane



Make sure vehicle is fully seated in unit – load vehicle on level surface



Loosen safety lock bolt before loading vehicle – tighten after vehicle is loaded if vehicle will be moved on uneven surfaces